

MODEL: ALC6102

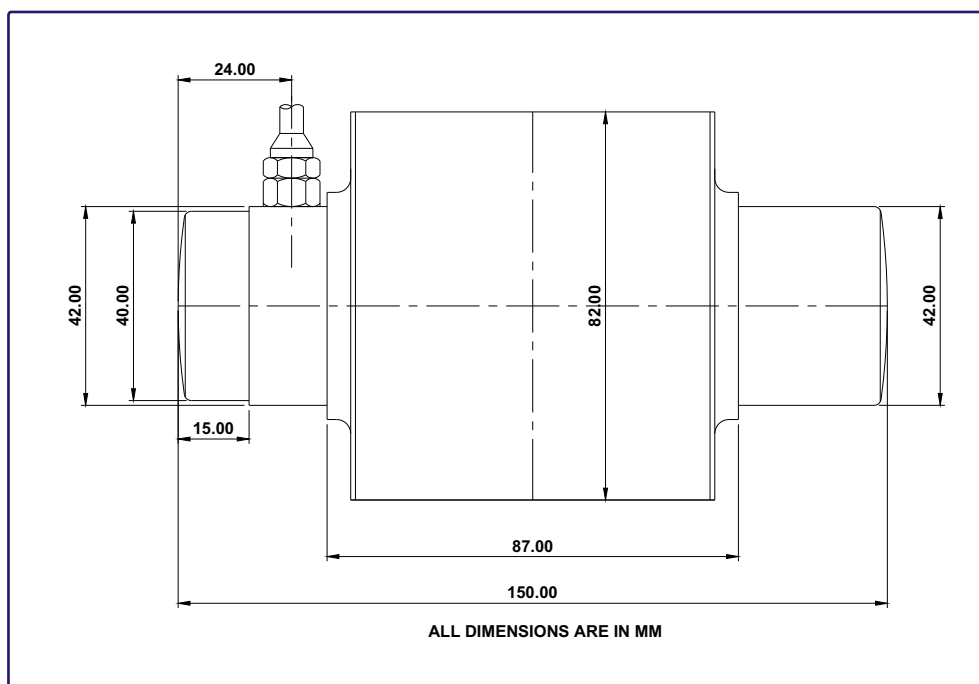


**FEATURES:**

- High Accuracy
- Multi column construction
- Easy installation and
- Reliable performance

**APPLICATION:**

- Ability, suitable for automobile testing
- Electronic truck scales, Hopper scales,
- Dynamic scale and other electronic
- Weighing devices.



**TECHNICAL FEATURES**

SENSITIVITY(mV/V)	: 2.0 mV/V ± 0.4%	ULTIMATE OVER LOAD	: 300%
INPUT RESISTANCE	: 1160 Ohms ± 10	CREEP 30 MINUTES	: < ± 0.020
OUTPUT RESISTANCE	: 1000 Ohms ± 3	NON LINEARITY	: < ± 0.025
ZERO BALANCE	: 0 ± 2%	TEMP. COMP. RANGE	: -10°C / 40°C
EXCITATION VOLTAGE	: 10 VDC	TEMP. OPERATING RANGE	: -20°C / 70°C
MAXIMUM EXCITATION	: 15 VDC	INSULATION RESISTANCE	: >1000 Mohms
SAFE LOAD	: 150%	PROTECTION CLASS	: IP 68